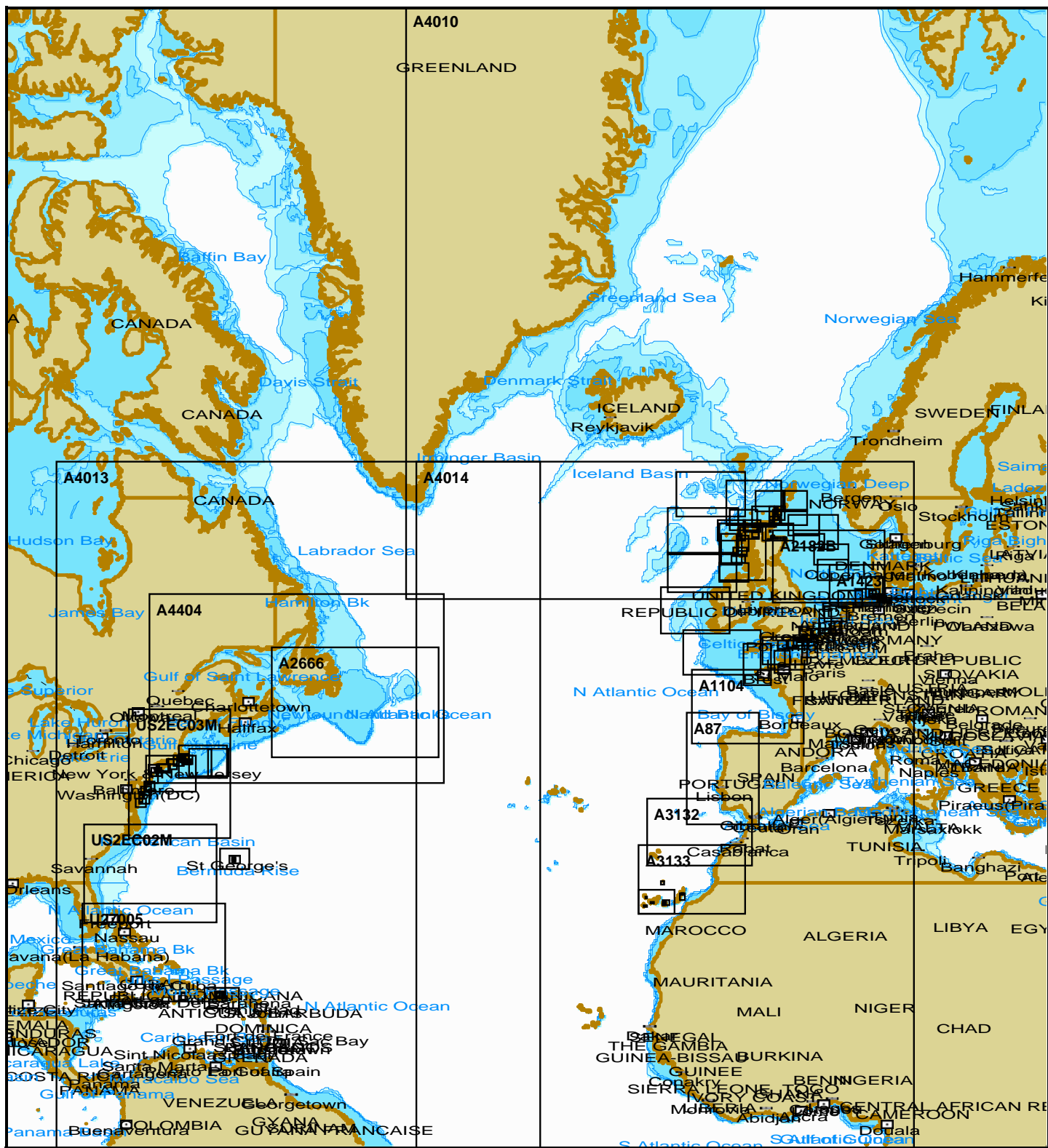


Charts of Folio DCNAC2EL (Collection WF 76)



Charts: 104, Inserts: 40, Size: 21 Mb

File Name	Scale	Update d	Inser ts	Issue	Description	Ref. Number
A1104	1:1 000 000	25.05.2017	0	WF 76	BAY OF BISCAY.	TR-CH-11
A1423	1:375 000	25.05.2017	0	WF 76	NORTH SEA. TERSCHELLING TO ESBJERG.	TR-CH-11
A1861	1:350 000	25.05.2017	0	WF 76	NORTH ATLANTIC OCEAN. ISLAS CANARIAS. GRAN CANARIA TO EL HIERRO.	TR-CH-11
A2182B	1:750 000	25.05.2017	0	WF 76	NORTH SEA. CENTRAL SHEET.	TR-CH-11
A2449	1:150 000	27.04.2017	0	WF 76	NORTH SEA. DOVER STRAIT TO WESTERSCHDEL.	TR-CH-11
A2451	1:150 000	25.05.2017	0	WF 76	ENGLISH CHANNEL. NEWHAVEN TO DOVER & CAP D'ANTIFER TO CAP GRIS-NEZ.	TR-CH-11
A2655	1:325 000	02.02.2017	0	WF 76	ENGLISH CHANNEL. WESTERN ENTRANCE.	TR-CH-11
A2656	1:325 000	13.04.2017	0	WF 76	ENGLISH CHANNEL. CENTRAL PART.	TR-CH-11
A2666	1:1 500 000	25.05.2017	0	WF 76	CANADA - EAST COAST. GRAND BANKS OF NEWFOUNDLAND.	TR-CH-11

A2668	1:30 000	25.05.2017	0	WF 76	CHINA - BO HAI. CAOFEIDIAN GANGQU. BASIN NO 3.	TR-CH-11
A2669	1:150 000	25.05.2017	0	WF 76	ENGLISH CHANNEL. CHANNEL ISLANDS AND ADJACENT COAST OF FRANCE.	TR-CH-11
A267	1:200 000	25.05.2017	0	WF 76	NORTH SEA. OFFSHORE CHARTS. SHEET 10.	TR-CH-11
A272	1:200 000	25.05.2017	0	WF 76	NORTH SEA. OFFSHORE CHARTS. SHEET 8.	TR-CH-11
A291	1:200 000	25.05.2017	0	WF 76	NORTH SEA. OFFSHORE CHARTS. SHEET 4.	TR-CH-11
A3132	1:1 250 000	25.05.2017	0	WF 76	STRAIT OF GIBRALTAR TO ARQUIPELAGO DA MADEIRA.	TR-CH-11
A3133	1:1 250 000	25.05.2017	1	WF 76	AFRICA. CASABLANCA TO ISLAS CANARIAS (INCLUDING ARQUIPELAGO DA MADEIRA)	TR-CH-11
A332	1:12 500	25.05.2017	1	WF 76	BERMUDA ISLANDS. GRASSY BAY AND GREAT SOUND INCLUDING LITTLE SOUND.	TR-CH-11
A360	1:300 000	25.05.2017	0	WF 76	NORTH ATLANTIC OCEAN. APPROACHES TO BERMUDA.	TR-CH-11
A4010	1:10 000 000	25.05.2017	0	WF 76	NORWEGIAN SEA AND ADJACENT SEAS.	TR-CH-11
A4013	1:10 000 000	25.05.2017	0	WF 76	NORTH ATLANTIC OCEAN. WESTERN PART.	TR-CH-11
A4014	1:10 000 000	25.05.2017	0	WF 76	NORTH ATLANTIC OCEAN. EASTERN PART.	TR-CH-11
A4404	1:3 500 000	25.05.2017	0	WF 76	NORTH ATLANTIC OCEAN. GULF OF MAINE TO STRAIT OF BELLE ISLE.	TR-CH-11
A867	1:17 500	25.05.2017	0	WF 76	BERMUDA. NORTH AND SOUTH CHANNELS TO GREAT SOUND.	TR-CH-11
A87	1:1 000 000	25.05.2017	0	WF 76	SPAIN AND PORTUGAL. CABO FINISTERRE TO THE STRAIT OF GIBRALTAR.	TR-CH-11
DE421025	1:22 000	07.04.2017	1	WF 76	Helgoland Approach	TR-CH-11
DE421040	1:22 000	05.05.2017	1	WF 76	Elbe - Northern Part	TR-CH-11
DE421050	1:22 000	13.04.2017	1	WF 76	Kiel Canal Approach	TR-CH-11
DE421055	1:22 000	24.03.2017	1	WF 76	Elbe Southern Part	TR-CH-11
DE521500	1:8 000	07.04.2017	4	WF 76	Hamburg	TR-CH-11
ES605	1:60 000	13.05.2017	2	WF 76	IS. CANARIAS - LANZAROTE Y FUERTEVENTURA. DE ARRECIFE A P.DEL ROSARIO.	TR-CH-11
ES610	1:60 000	13.05.2017	3	WF 76	ISLA DE GRAN CANARIA. DE CABO DESCOJONADO A LA PENINSULA DE GANDO.	TR-CH-11
ES6150A	1:7 500	13.05.2017	2	WF 76	ISLAS CANARIAS. ISLA DE LA GOMERA. PTO. DE SAN SEBASTIAN DE LA GOMERA.	TR-CH-11
FR6857	1:150 000	18.05.2017	0	WF 76	COTE NORD DE FRANCE. DU CAP DE LA HAGUE A FECAMP. BAIE DE SEINE.	TR-CH-11
G103	1:150 000	19.05.2017	0	WF 76	NORDSEE. DEUTSCHE UND DANISCHE KUSTE. HELGOLAND BIS ROMO.	TR-CH-11
G87	1:150 000	19.05.2017	0	WF 76	DEUTSCHE UND NIEDERLANDISCHE KUSTE. BORKUM BIS NEUWERK UND HELGOLAND.	TR-CH-11
GB201125	1:350 000	15.01.2016	0	WF 76	NORTH ATLANTIC OCEAN. BRITISH ISLES. WESTERN APPROACHES TO IRELAND.	TR-CH-11
GB201127	1:350 000	05.02.2016	0	WF 76	NORTH ATLANTIC OCEAN. BRITISH ISLES. OUTER APPROACHES TO THE NORTH CHANNEL.	TR-CH-11
GB201128	1:350 000	27.01.2017	0	WF 76	NORTH ATLANTIC OCEAN. BANKS WEST OF THE HEBRIDES.	TR-CH-11
GB20219A	1:350 000	21.04.2017	0	WF 76	BRITISH ISLES. WESTERN APPROACHES TO THE ORKNEY AND SHETLAND ISLANDS.	TR-CH-11
GB202635	1:350 000	06.01.2017	0	WF 76	BRITISH ISLES. SCOTLAND WEST COAST.	TR-CH-11
GB202649	1:350 000	10.03.2017	0	WF 76	CELTIC SEA. WESTERN APPROACHES TO THE ENGLISH CHANNEL.	TR-CH-11
GB21129A	1:350 000	03.07.2015	0	WF 76	NORTH ATLANTIC OCEAN. BANKS NORTH-WEST OF THE HEBRIDES.	TR-CH-11
GB300115	1:180 000	21.04.2017	0	WF 76	SCOTLAND - EAST COAST. MORAY FIRTH.	TR-CH-11
GB300278	1:180 000	05.05.2017	0	WF 76	NORTH SEA. OFFSHORE CHARTS. SHEET 5.	TR-CH-11
GB301119	1:180 000	02.08.2013	0	WF 76	BRITISH ISLES. ORKNEY AND SHETLAND ISLANDS. FAIR ISLE CHANNEL.	TR-CH-11
GB301234	1:180 000	09.12.2016	0	WF 76	UNITED KINGDOM. NORTH - WESTERN APPROACHES TO THE ORKNEY ISLANDS.	TR-CH-11
GB301504	1:90 000	31.03.2017	0	WF 76	ENGLAND - EAST COAST. CROMER TO ORFORD NESS.	TR-CH-11
GB301778	1:90 000	23.03.2016	0	WF 76	SCOTLAND-WEST COAST. STANTON BANKS TO PASSAGE OF TIREE.	TR-CH-11
GB301785	1:90 000	11.11.2016	0	WF 76	SCOTLAND - WEST COAST. NORTH MINCH. NORTHERN PART.	TR-CH-11
GB301794	1:90 000	20.05.2016	0	WF 76	SCOTLAND - WEST COAST. NORTH MINCH. SOUTHERN PART.	TR-CH-11
GB301795	1:90 000	10.03.2017	0	WF 76	SCOTLAND - WEST COAST. THE LITTLE MINCH.	TR-CH-11
GB301796	1:90 000	13.05.2016	0	WF 76	SCOTLAND - WEST COAST. BARRA HEAD TO POINT OF ARDNAMURCHAN.	TR-CH-11
GB301942	1:180 000	28.04.2017	0	WF 76	SCOTLAND - NORTH COAST. FAIR ISLE TO WICK.	TR-CH-11
GB301954	1:180 000	22.01.2016	0	WF 76	SCOTLAND - N COAST. CAPE WRATH TO PENTLAND FIRTH.	TR-CH-11
GB302045	1:45 000	05.05.2017	0	WF 76	ENGLAND - SOUTH COAST. OUTER APPROACHES TO THE SOLENT.	TR-CH-11
GB302162	1:45 000	02.12.2016	0	WF 76	SCOTLAND - NORTH COAST. PENTLAND FIRTH AND APPROACHES.	TR-CH-11
GB302249	1:45 000	21.08.2015	0	WF 76	SCOTLAND - NORTH COAST. ORKNEY ISLANDS. WESTERN SHEET.	TR-CH-11
GB302250	1:45 000	05.05.2017	0	WF 76	SCOTLAND - NORTH COAST. ORKNEY ISLANDS. EASTERN SHEET.	TR-CH-11
GB302615	1:90 000	23.09.2016	0	WF 76	ENGLAND - SOUTH COAST. BILL OF PORTLAND TO THE NEEDLES.	TR-CH-11
GB302720	1:180 000	15.05.2015	0	WF 76	SCOTLAND - NORTH COAST. FLANNAN ISLES TO SULE SKERRY.	TR-CH-11
GB302721	1:180 000	04.09.2015	0	WF 76	SCOTLAND - WEST COAST. SAINT KILDA TO BUTT OF LEWIS.	TR-CH-11
GB302722	1:180 000	27.01.2017	0	WF 76	SCOTLAND - WEST COAST. SKERRYVORE TO SAINT KILDA.	TR-CH-11
GB302723	1:180 000	06.01.2017	0	WF 76	WESTERN APPROACHES TO THE NORTH CHANNEL.	TR-CH-11
GB31652A	1:45 000	05.05.2017	0	WF 76	ENGLAND - SOUTH COAST. SELSEY BILL TO BEACHY HEAD.	TR-CH-11
GB400536	1:45 000	17.03.2017	1	WF 76	ENGLAND - SOUTH COAST. BEACHY HEAD TO DUNGNESS.	TR-CH-11
GB40244A	1:12 000	05.05.2017	1	WF 76	ENGLAND - SOUTH COAST. APPROACHES TO SHOREHAM.	TR-CH-11
GB402500	1:22 000	30.12.2016	0	WF 76	SCOTLAND - WEST COAST. APPROACHES TO ULLAPOOL.	TR-CH-11

GB40582A	1:12 000	30.12.2016	10	WF 76	HARBOURS ON THE N. AND E. COASTS OF SCOTLAND. FRASERBURGH APPROACHES.	TR-CH-11
GB40684B	1:22 000	05.05.2017	1	WF 76	SCOTLAND - N COAST. ORKNEY ISLANDS. SOUNDS OF RAPNESS, FARAY, EDAY AND SANDAY.	TR-CH-11
GB40702C	1:22 000	13.01.2017	0	WF 76	SCOTLAND - WEST COAST. APPROACHES TO KINLOCHBERVIE.	TR-CH-11
GB50244C	1:4 000	03.03.2017	3	WF 76	SOUTH COAST OF ENGLAND. LITTLEHAMPTON HARBOUR.	TR-CH-11
NL1630	1:150 000	12.05.2017	0	WF 76	NETHERLANDS. WEST HINDER & OUTER GABBARD TO VLISSINGEN & SCHEVENINGEN.	TR-CH-11
NL1631	1:150 000	18.05.2017	0	WF 76	NORTH SEA. NETHERLANDS. DW ROUTES TO IJMUIDEN AND TEXEL.	TR-CH-11
NL1633	1:150 000	18.05.2017	0	WF 76	NORTH SEA. TSS NORTH FRIESLAND AND GW/EMS TO VLIELAND AND BORKUM.	TR-CH-11
NO2B0404	1:350 000	11.04.2017	0	WF 76	NORSKERENNA	TR-CH-11
U13200	1:400 000	20.05.2017	0	WF 76	UNITED STATES - EAST COAST. GEORGES BANK AND NANTUCKET SHOALS.	TR-CH-10
U27005	1:1 500 000	20.05.2017	0	WF 76	NORTH ATLANTIC OCEAN-CARRIBEAN SEA.WEST INDIES. KEY WEST TO SAN JUAN.	TR-CH-10
US2EC02M	1:1 200 000	04.11.2016	0	WF 76	CAPE HATTERAS TO STRAITS OF FLORIDA	TR-CH-10
US2EC03M	1:1 200 000	04.04.2017	0	WF 76	CAPE SABLE TO CAPE HATTERAS	TR-CH-10
US3EC06M	1:220 000	27.06.2016	0	WF 76	GEORGES BANK WEST APRT SPEC CHT FOR FISHING INDUSTRY	TR-CH-10
US3EC07M	1:220 000	20.07.2016	0	WF 76	GEORGES BANK EAST PART SPEC CHT FOR FISHING INDUSTRY	TR-CH-10
US3NY01M	1:400 000	20.04.2017	0	WF 76	APPROACHES TO NEW YORK NANTUCKET SHOALS TO FIVE FATHOM BANK	TR-CH-10
US3PR10M	1:326 856	17.03.2017	0	WF 76	PUERTO RICO AND VIRGIN ISLANDS	TR-CH-10
US4CN21M	1:80 000	01.02.2017	1	WF 76	BLOCK ISLAND SOUND AND APPROACHES	TR-CH-10
US4DE11M	1:80 000	20.04.2017	0	WF 76	CAPE MAY TO FENWICK ISLAND	TR-CH-10
US4MA23M	1:80 000	21.04.2017	0	WF 76	MARTHA'S VINEYARD TO BLOCK ISLAND	TR-CH-10
US4MA43M	1:80 000	31.03.2017	0	WF 76	NANTUCKET SOUND AND APPROACHES	TR-CH-10
US4NJ22M	1:80 000	20.05.2016	1	WF 76	LITTLE EGG INLET TO HEREFORD INLET	TR-CH-10
US4NJ23M	1:80 000	14.01.2016	0	WF 76	SEA GIRT TO LITTLE EGG INLET	TR-CH-10
US4NY1AM	1:80 000	02.03.2017	1	WF 76	APPROACHES TO NEW YORK FIRE ISLAND LIGHT TO SEA GIRT	TR-CH-10
US4NY53M	1:80 000	29.02.2016	0	WF 76	SHINNECOCK LIGHT TO FIRE ISLAND LIGHT	TR-CH-10
US4PR31M	1:100 000	23.03.2017	1	WF 76	PUNTA PENON TO PUNTA VACIA TALEGA	TR-CH-10
US4VA50M	1:80 000	20.04.2017	1	WF 76	FENWICK ISLAND TO CHINCOTEAGUE INLET	TR-CH-10
US4VA70M	1:80 000	19.04.2017	1	WF 76	CHINCOTEAGUE INLET TO GREAT MACHIPONGO INLET	TR-CH-10
US5MA20M	1:40 000	21.04.2017	0	WF 76	SOUTH COAST OF CAPE COD AND BUZZARDS BAY	TR-CH-10
US5MA21M	1:20 000	12.04.2017	0	WF 76	MARTHA'S VINEYARD-EASTERN PART;OAK BLUFFS,VINEYARD HAVEN,EDGARTOWN HRS	TR-CH-10
US5MA24M	1:20 000	04.04.2017	0	WF 76	WESTPORT RIVER AND APPROACHES	TR-CH-10
US5MA25M	1:40 000	01.05.2017	0	WF 76	BUZZARDS BAY	TR-CH-10
US5MA28M	1:5 000	24.03.2017	0	WF 76	WOODS HOLE	TR-CH-10
US5MA29M	1:40 000	06.04.2017	0	WF 76	U.S. - E COAST. MASSACHUSETTS. MARTHA'S VINEYARD; MENEMSHA POND	TR-CH-10
US5MA40M	1:10 000	28.03.2017	0	WF 76	NANTUCKET HARBOR	TR-CH-10
US5MA41M	1:40 000	20.04.2017	0	WF 76	NANTUCKET ISLAND	TR-CH-10
US5NY52M	1:40 000	21.04.2017	1	WF 76	SHINNECOCK BAY TO EAST ROCKAWAY INLET	TR-CH-10
US5PR32M	1:10 000	21.02.2017	0	WF 76	BAHIA DE SAN JUAN	TR-CH-10