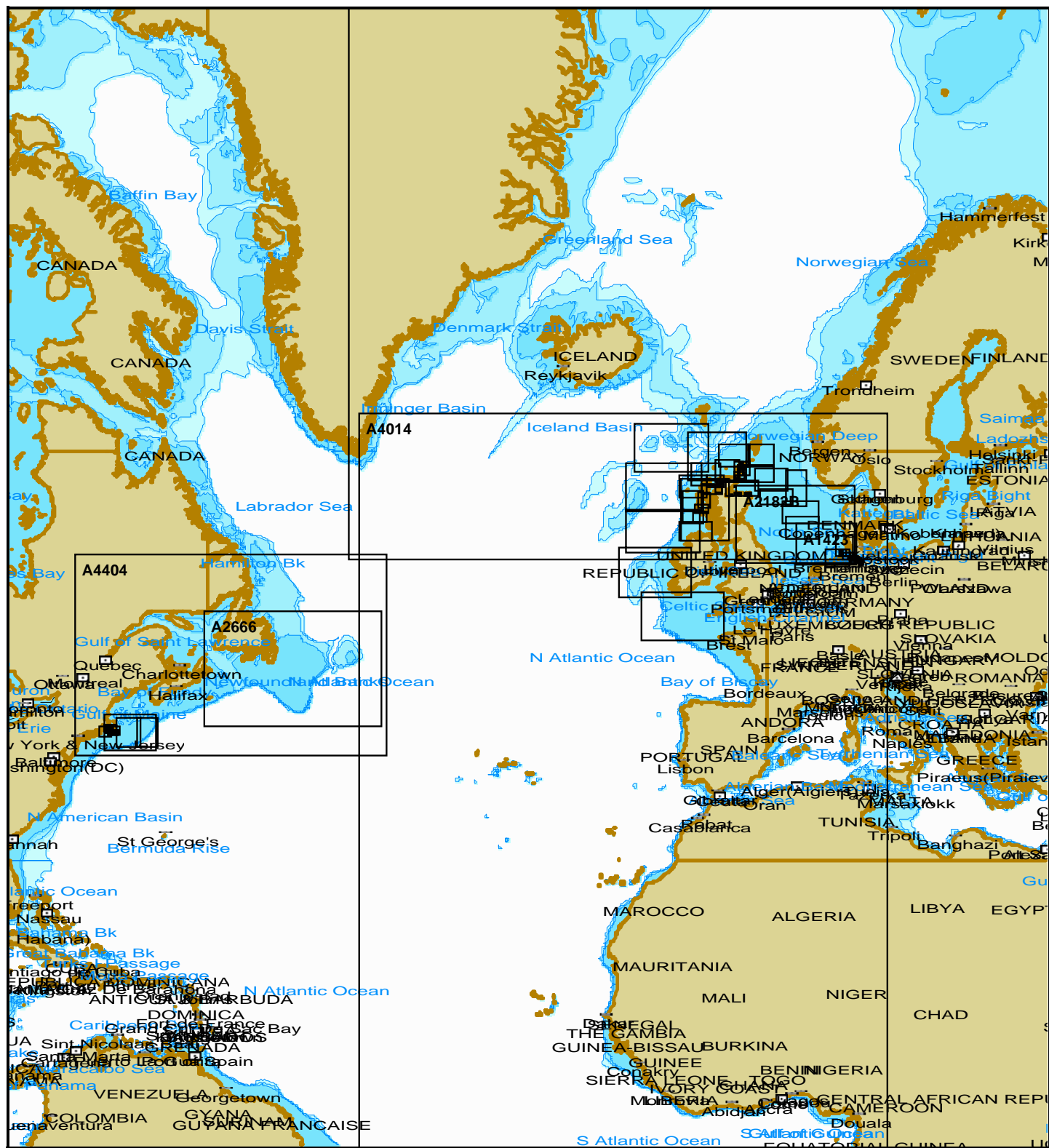


## Charts of Folio DCNAC1SL (Collection WF 76)



Charts: 59, Inserts: 19, Size: 13 Mb

File Name	Scale	Update d	Inserts	Issue	Description	Ref. Number
A1423	1:375 000	25.05.2017	0	WF 76	NORTH SEA. TERSCHELLING TO ESBJERG.	TR-CH-11
A2182B	1:750 000	25.05.2017	0	WF 76	NORTH SEA. CENTRAL SHEET.	TR-CH-11
A2666	1:1 500 000	25.05.2017	0	WF 76	CANADA - EAST COAST. GRAND BANKS OF NEWFOUNDLAND.	TR-CH-11
A267	1:200 000	25.05.2017	0	WF 76	NORTH SEA. OFFSHORE CHARTS. SHEET 10.	TR-CH-11
A272	1:200 000	25.05.2017	0	WF 76	NORTH SEA. OFFSHORE CHARTS. SHEET 8.	TR-CH-11
A291	1:200 000	25.05.2017	0	WF 76	NORTH SEA. OFFSHORE CHARTS. SHEET 4.	TR-CH-11
A4010	1:10 000 000	25.05.2017	0	WF 76	NORWEGIAN SEA AND ADJACENT SEAS.	TR-CH-11
A4014	1:10 000 000	25.05.2017	0	WF 76	NORTH ATLANTIC OCEAN. EASTERN PART.	TR-CH-11
A4404	1:3 500 000	25.05.2017	0	WF 76	NORTH ATLANTIC OCEAN. GULF OF MAINE TO STRAIT OF BELLE ISLE.	TR-CH-11
DE421025	1:22 000	07.04.2017	1	WF 76	Helgoland Approach	TR-CH-11

DE421040	1:22 000	05.05.2017	1	WF 76	Elbe - Northern Part	TR-CH-11
DE421050	1:22 000	13.04.2017	1	WF 76	Kiel Canal Approach	TR-CH-11
DE421055	1:22 000	24.03.2017	1	WF 76	Elbe Southern Part	TR-CH-11
DE521500	1:8 000	07.04.2017	4	WF 76	Hamburg	TR-CH-11
G103	1:150 000	19.05.2017	0	WF 76	NORDSEE. DEUTSCHE UND DANISCHE KUSTE. HELGOLAND BIS ROMO.	TR-CH-11
G87	1:150 000	19.05.2017	0	WF 76	DEUTSCHE UND NIEDERLANDISCHE KUSTE. BORKUM BIS NEUWERK UND HELGOLAND.	TR-CH-11
GB201125	1:350 000	15.01.2016	0	WF 76	NORTH ATLANTIC OCEAN. BRITISH ISLES. WESTERN APPROACHES TO IRELAND.	TR-CH-11
GB201127	1:350 000	05.02.2016	0	WF 76	NORTH ATLANTIC OCEAN. BRITISH ISLES. OUTER APPROACHES TO THE NORTH CHANNEL.	TR-CH-11
GB201128	1:350 000	27.01.2017	0	WF 76	NORTH ATLANTIC OCEAN. BANKS WEST OF THE HEBRIDES.	TR-CH-11
GB20219A	1:350 000	21.04.2017	0	WF 76	BRITISH ISLES. WESTERN APPROACHES TO THE ORKNEY AND SHETLAND ISLANDS.	TR-CH-11
GB202635	1:350 000	06.01.2017	0	WF 76	BRITISH ISLES. SCOTLAND WEST COAST.	TR-CH-11
GB202649	1:350 000	10.03.2017	0	WF 76	CELTIC SEA. WESTERN APPROACHES TO THE ENGLISH CHANNEL.	TR-CH-11
GB21129A	1:350 000	03.07.2015	0	WF 76	NORTH ATLANTIC OCEAN. BANKS NORTH-WEST OF THE HEBRIDES.	TR-CH-11
GB300115	1:180 000	21.04.2017	0	WF 76	SCOTLAND - EAST COAST. MORAY FIRTH.	TR-CH-11
GB300278	1:180 000	05.05.2017	0	WF 76	NORTH SEA. OFFSHORE CHARTS. SHEET 5.	TR-CH-11
GB301119	1:180 000	02.08.2013	0	WF 76	BRITISH ISLES. ORKNEY AND SHETLAND ISLANDS. FAIR ISLE CHANNEL.	TR-CH-11
GB301234	1:180 000	09.12.2016	0	WF 76	UNITED KINGDOM. NORTH - WESTERN APPROACHES TO THE ORKNEY ISLANDS.	TR-CH-11
GB301778	1:90 000	23.03.2016	0	WF 76	SCOTLAND-WEST COAST.STANTON BANKS TO PASSAGE OF TIREE.	TR-CH-11
GB301785	1:90 000	11.11.2016	0	WF 76	SCOTLAND - WEST COAST. NORTH MINCH. NORTHERN PART.	TR-CH-11
GB301794	1:90 000	20.05.2016	0	WF 76	SCOTLAND - WEST COAST. NORTH MINCH. SOUTHERN PART.	TR-CH-11
GB301795	1:90 000	10.03.2017	0	WF 76	SCOTLAND - WEST COAST. THE LITTLE MINCH.	TR-CH-11
GB301796	1:90 000	13.05.2016	0	WF 76	SCOTLAND - WEST COAST. BARRA HEAD TO POINT OF ARDNAMURCHAN.	TR-CH-11
GB301942	1:180 000	28.04.2017	0	WF 76	SCOTLAND - NORTH COAST. FAIR ISLE TO WICK.	TR-CH-11
GB301954	1:180 000	22.01.2016	0	WF 76	SCOTLAND - N COAST. CAPE WRATH TO PENTLAND FIRTH.	TR-CH-11
GB302162	1:45 000	02.12.2016	0	WF 76	SCOTLAND - NORTH COAST. PENTLAND FIRTH AND APPROACHES.	TR-CH-11
GB302249	1:45 000	21.08.2015	0	WF 76	SCOTLAND - NORTH COAST. ORKNEY ISLANDS. WESTERN SHEET.	TR-CH-11
GB302250	1:45 000	05.05.2017	0	WF 76	SCOTLAND - NORTH COAST. ORKNEY ISLANDS. EASTERN SHEET.	TR-CH-11
GB302720	1:180 000	15.05.2015	0	WF 76	SCOTLAND - NORTH COAST. FLANNAN ISLES TO SULE SKERRY.	TR-CH-11
GB302721	1:180 000	04.09.2015	0	WF 76	SCOTLAND - WEST COAST. SAINT KILDA TO BUTT OF LEWIS.	TR-CH-11
GB302722	1:180 000	27.01.2017	0	WF 76	SCOTLAND - WEST COAST. SKERRYVORE TO SAINT KILDA.	TR-CH-11
GB302723	1:180 000	06.01.2017	0	WF 76	WESTERN APPROACHES TO THE NORTH CHANNEL.	TR-CH-11
GB402500	1:22 000	30.12.2016	0	WF 76	SCOTLAND - WEST COAST. APPROACHES TO ULLAPOOL.	TR-CH-11
GB40582A	1:12 000	30.12.2016	10	WF 76	HARBOURS ON THE N. AND E. COASTS OF SCOTLAND. FRASERBURGH APPROACHES.	TR-CH-11
GB40684B	1:22 000	05.05.2017	1	WF 76	SCOTLAND - N COAST. ORKNEY ISLANDS. SOUNDS OF RAPNESS, FARAY, EDAY AND SANDAY.	TR-CH-11
GB40702C	1:22 000	13.01.2017	0	WF 76	SCOTLAND - WEST COAST. APPROACHES TO KINLOCHBERVIE.	TR-CH-11
NO2B0404	1:350 000	11.04.2017	0	WF 76	NORSKERENNA	TR-CH-11
U13200	1:400 000	20.05.2017	0	WF 76	UNITED STATES - EAST COAST. GEORGES BANK AND NANTUCKET SHOALS.	TR-CH-10
US3EC06M	1:220 000	27.06.2016	0	WF 76	GEORGES BANK WEST APRT SPEC CHT FOR FISHING INDUSTRY	TR-CH-10
US3EC07M	1:220 000	20.07.2016	0	WF 76	GEORGES BANK EAST PART SPEC CHT FOR FISHING INDUSTRY	TR-CH-10
US4MA23M	1:80 000	21.04.2017	0	WF 76	MARTHA'S VINEYARD TO BLOCK ISLAND	TR-CH-10
US4MA43M	1:80 000	31.03.2017	0	WF 76	NANTUCKET SOUND AND APPROACHES	TR-CH-10
US5MA20M	1:40 000	21.04.2017	0	WF 76	SOUTH COAST OF CAPE COD AND BUZZARDS BAY	TR-CH-10
US5MA21M	1:20 000	12.04.2017	0	WF 76	MARTHA'S VINEYARD-EASTERN PART;OAK BLUFFS,VINEYARD HAVEN,EDGARTOWN HRS	TR-CH-10
US5MA24M	1:20 000	04.04.2017	0	WF 76	WESTPORT RIVER AND APPROACHES	TR-CH-10
US5MA25M	1:40 000	01.05.2017	0	WF 76	BUZZARDS BAY	TR-CH-10
US5MA28M	1:5 000	24.03.2017	0	WF 76	WOODS HOLE	TR-CH-10
US5MA29M	1:40 000	06.04.2017	0	WF 76	U.S. - E COAST. MASSACHUSETTS. MARTHA'S VINEYARD; MENEMSHA POND	TR-CH-10
US5MA40M	1:10 000	28.03.2017	0	WF 76	NANTUCKET HARBOR	TR-CH-10
US5MA41M	1:40 000	20.04.2017	0	WF 76	NANTUCKET ISLAND	TR-CH-10